



915 Oxford Road
Tilehurst, RG30 6TP
Guide price £450,000 Freehold



VP - Presented to the market is this delightful three-bedroom semi-detached house. The open-plan living and dining area creates a warm and inviting atmosphere, seamlessly connecting to a beautifully refitted kitchen/dining space, perfect for family meals and gatherings.

The property features a well-appointed bathroom and a convenient downstairs WC, ensuring practicality for everyday living. Additionally, a storage and laundry room provides ample space for household essentials, keeping your living areas tidy and organised.

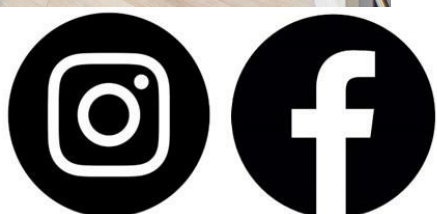
Outside, the enclosed rear garden is a true highlight, boasting a lovely patio area and lawn, perfect for enjoying sunny days or hosting barbecues with friends and family. The property also benefits from off-road parking, a valuable asset in this sought-after location.

Situated within walking distance to Tilehurst train station, various bus routes, and a range of local amenities and parks, this home is ideally positioned for both commuting and leisure. Whether you are a growing family or looking for a comfortable space to settle down, this semi-detached house on Oxford Road is a wonderful opportunity not to be missed.

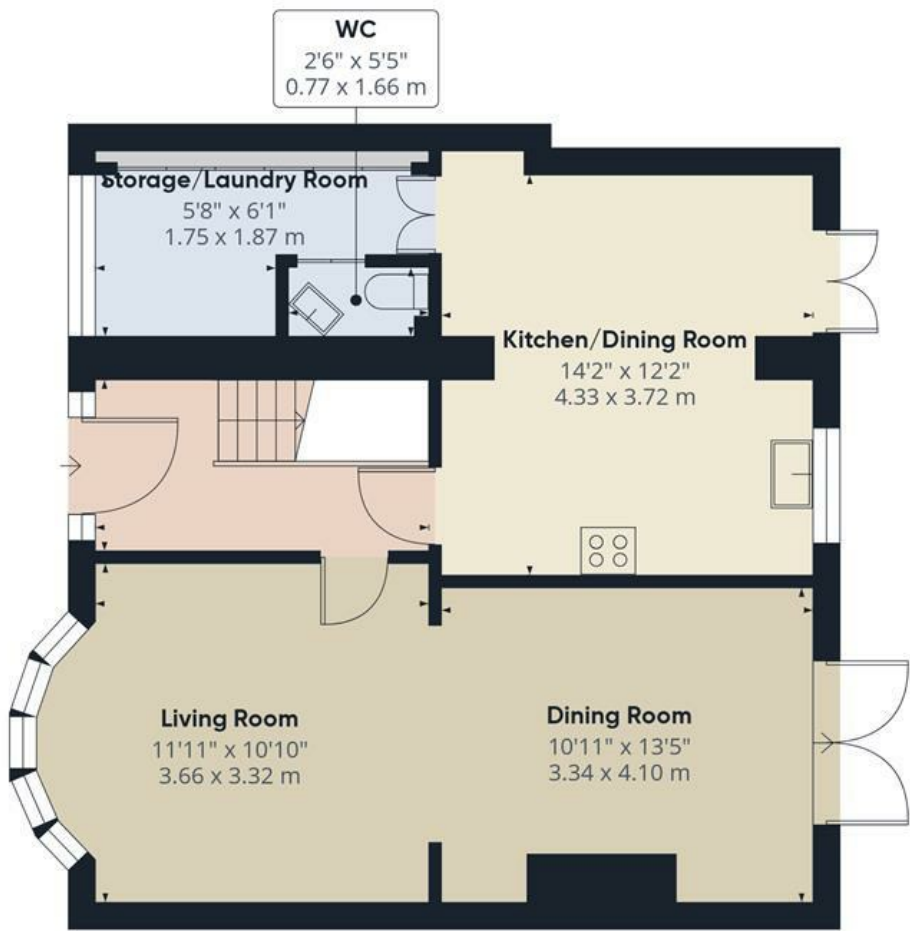
Council tax band - C

- THREE BEDROOMS
- SEMI DETACHED HOUSE
- OFF ROAD PARKING
- GARAGE/STORAGE
- DOWNSTAIRS WC
- KITCHEN/DINING ROOM
- CLOSE TO TILEHURST TRAIN STATION
- OPEN PLAN LIVING/DINING ROOM
- 360 VIRTUAL TOUR

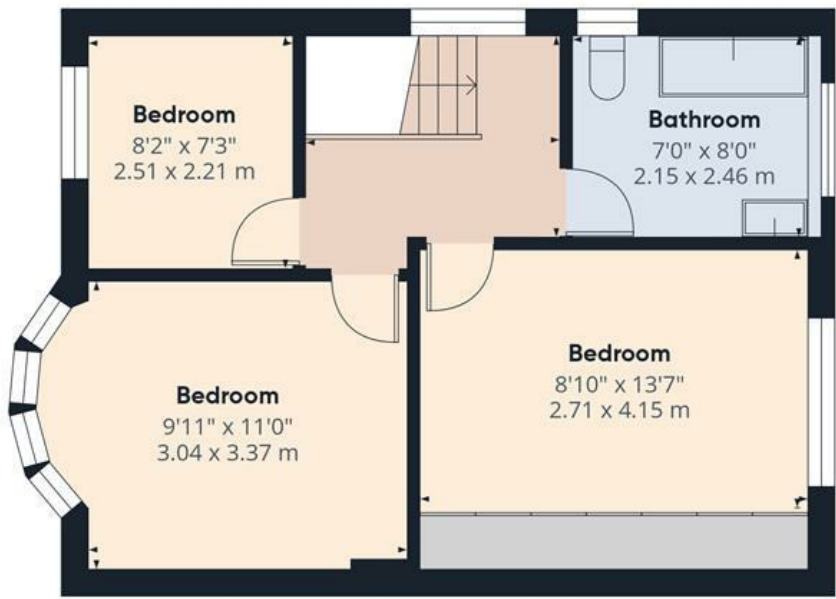
Get Social



VillageProperties.co.uk



Ground Floor



Floor 1



Approximate total area^m
1062 ft²
98.7 m²

(1) Excluding balconies and terraces

Calculations reference the RICS IPMS 3C standard. Measurements are approximate and not to scale. This floor plan is intended for illustration only.

GIRAFFE360

