

Vp

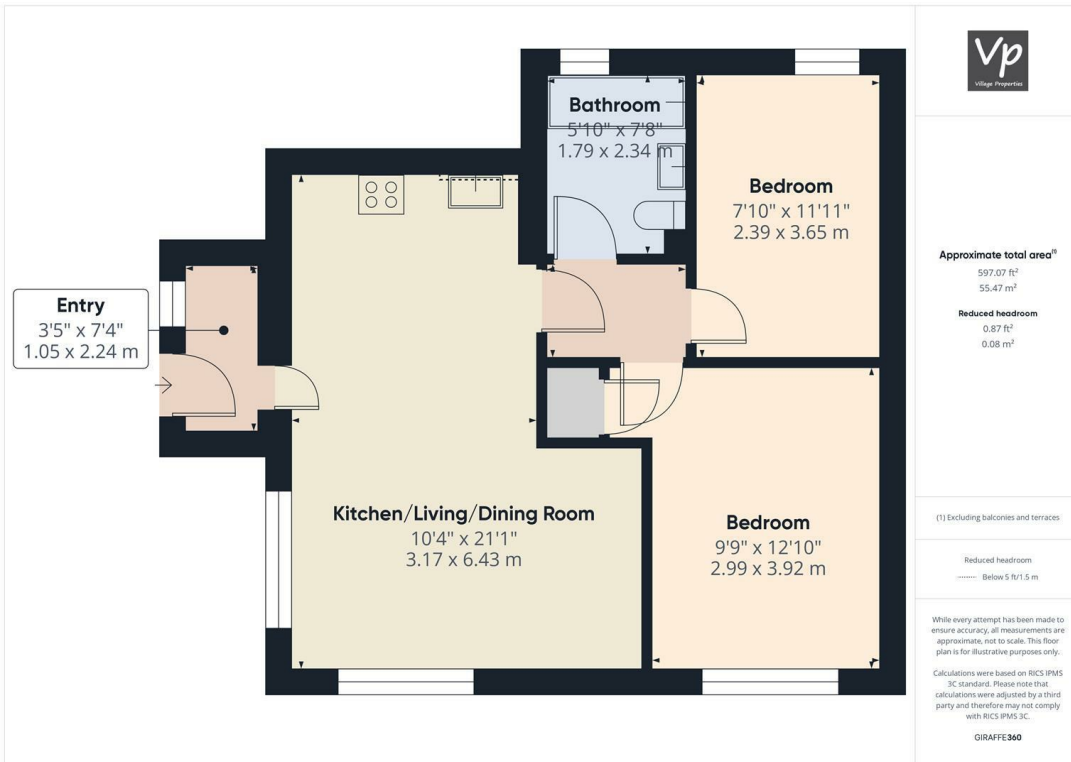
47 Little Heath Road
Tilehurst, RG31 5TY

Guide price £270,000 Leasehold



VillageProperties.co.uk

47 Little Heath Road



DESCRIPTION:

VP - Presented to the market is this modern two double bedroom ground floor maisonette with allocated parking and within excellent access to bus routes, amenities, local schools and countryside walks and views. The accommodation comprises entrance porch/storage, open plan kitchen/dining living area, two bedrooms and a bathroom suite.

Council tax band - C

Lease remaining - 115

Ground rent - £125 every 6 months

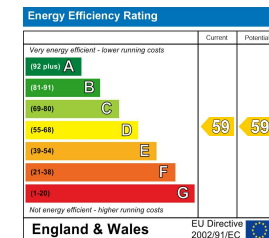
Service charge - £700 every 6 months

This covers building insurance, external window cleaning and gardening.

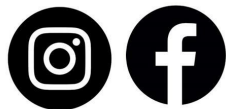
SUMMARY OF ACCOMMODATION:

- TWO DOUBLE BEDROOMS
- ALLOCATED PARKING
- OPEN PLAN LIVING DINING KITCHEN AREA
- GROUND FLOOR PROPERTY
- STUNNING VIEWS OPPOSITE
- CIRCA 115 YEARS LEFT ON LEASE

ADDITIONAL INFO:



Get Social



VIEWING STRICTLY BY APPOINTMENT:

T: 0118 941 5607

E: sales@villageproperties.org

W: www.villageproperties.co.uk

92 School Road
Reading
RG31 5AU