



## First Avenue Garston Park

Tilehurst, RG31 4TB

Guide price £240,000 Freehold



### DESCRIPTION

VP - Presented to the market is this stunning two bedroom park home with off road parking and an enclosed private rear garden. The property is within walking distance to amenities, bus routes and parks. The property comprises kitchen, living/dining room, two double bedrooms, en-suite and a bathroom suite. Internal viewings are highly recommended.

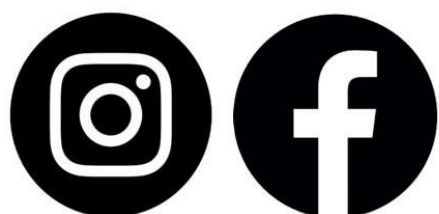
Size of Home: 36ft X 20ft

### SUMMARY OF ACCOMMODATION

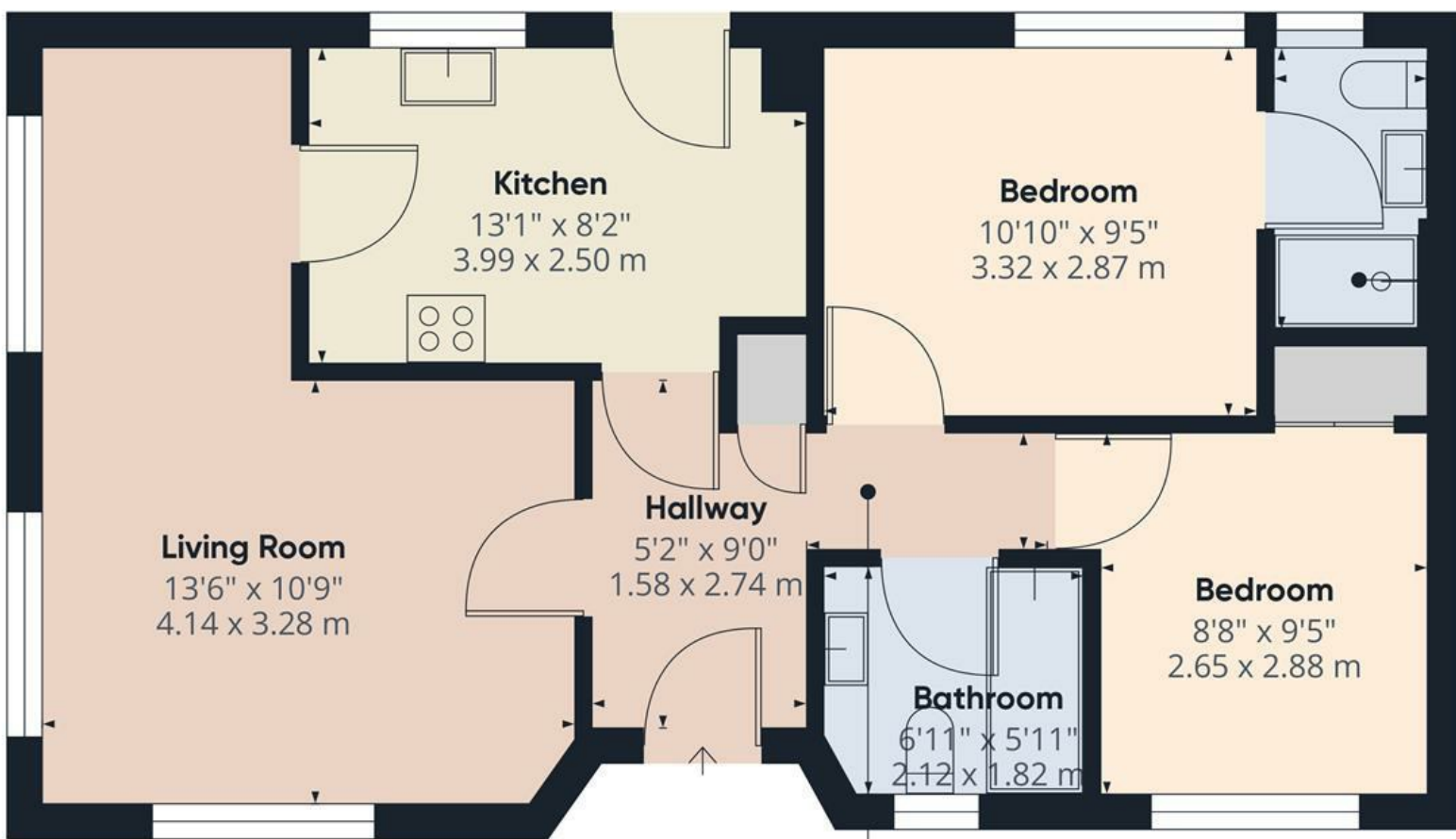
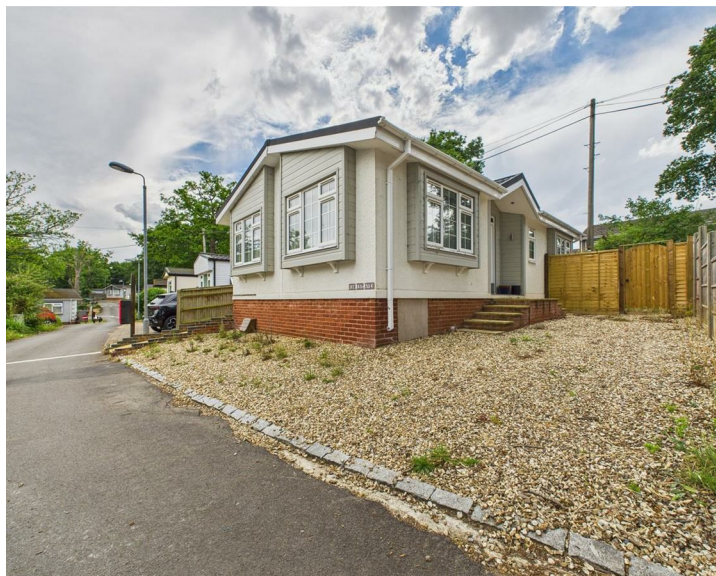
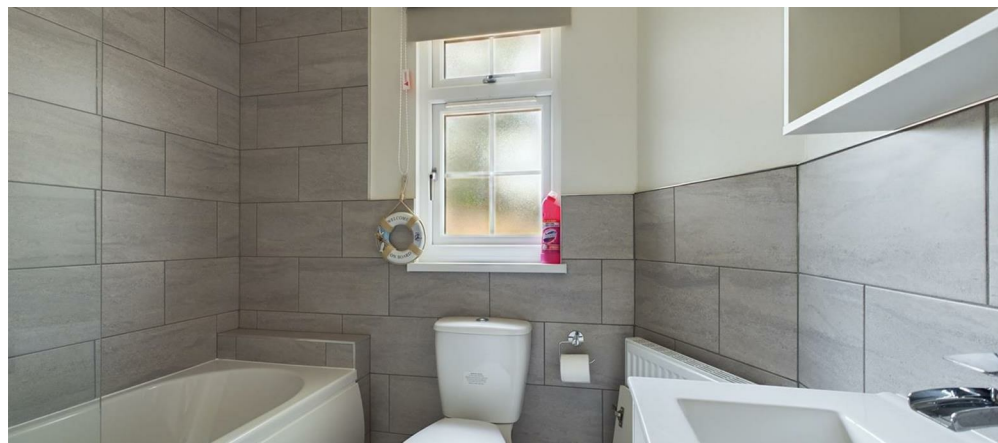
- NEW BUILD
- GARSTON PARK - OVER 45'S
- EXCELLENT CONDITON
- DRIVEWAY
- ENCLOSED REAR GARDEN
- PARTIALLY FURNISHED
- TWO DOUBLE BEDROOMS
- EN-SUITE
- Ground rent: £61.14 per week.



Get Social



VillageProperties.co.uk



Approximate total area<sup>(1)</sup>  
652.38 ft<sup>2</sup>  
60.61 m<sup>2</sup>

(1) Excluding balconies and terraces

While every attempt has been made to ensure accuracy, all measurements are approximate, not to scale. This floor plan is for illustrative purposes only.

GIRAFFE360