



10 Ogmores Close
Tilehurst, RG30 4SX

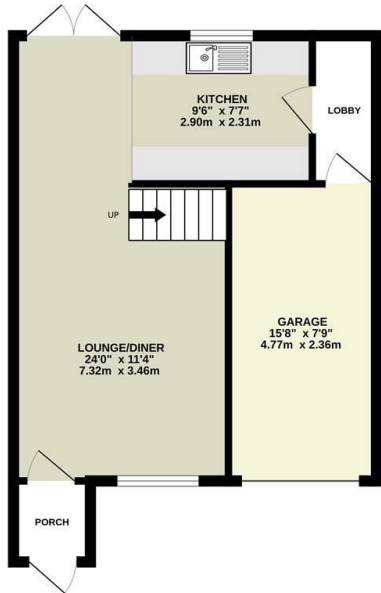


Guide price £365,000 Freehold

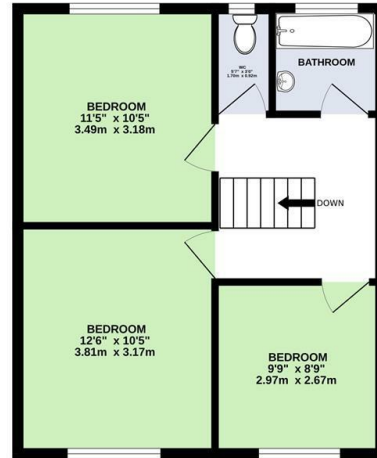
VillageProperties.co.uk

10 Ogmore Close

GROUND FLOOR
466 sq.ft. (43.3 sq.m.) approx.



1ST FLOOR
449 sq.ft. (41.7 sq.m.) approx.



TOTAL FLOOR AREA : 915 sq.ft. (85.0 sq.m.) approx.

Whilst every attempt has been made to ensure the accuracy of the floorplan contained here, measurements of doors, windows, rooms and any other items are approximate and no responsibility is taken for any error, omission or mis-statement. This plan is for illustrative purposes only and should be used as such by any prospective purchaser. The services, systems and appliances shown have not been tested and no guarantee as to their operability or efficiency can be given.
Made with Meleopix ©2023

DESCRIPTION:

VP -No onward chain. Presented to the market is this three bedroom property located in a cul de sac and within easy access to Tilehurst Village, amenities, schools and bus routes. The property comprises entrance porch, living/dining and kitchen area, storage room with access to the garage. On the first floor there are three generous size bedrooms and a bathroom. The rear garden is mainly laid to lawn with a patio area and side access gate.

Council tax band - C (Reading)

SUMMARY OF ACCOMMODATION:

- NO ONWARD CHAIN
- GARAGE
- SIDE ACCESS GATE
- THREE BEDROOMS
- OFF ROAD PARKING
- CUL DE SAC LOCATION

ADDITIONAL INFO:

Energy Efficiency Rating		Current	Potential
Very energy efficient - lower running costs			
92 plus	A		
81-91	B		
69-80	C		
55-68	D		
39-54	E		
21-38	F		
1-20	G		
Not energy efficient - higher running costs			
England & Wales		EU Directive 2002/91/EC	

Get Social



VIEWING STRICTLY BY APPOINTMENT:

T: 0118 941 5607
E: sales@villageproperties.org
W: www.villageproperties.co.uk

92 School Road
Reading
RG31 5AU