



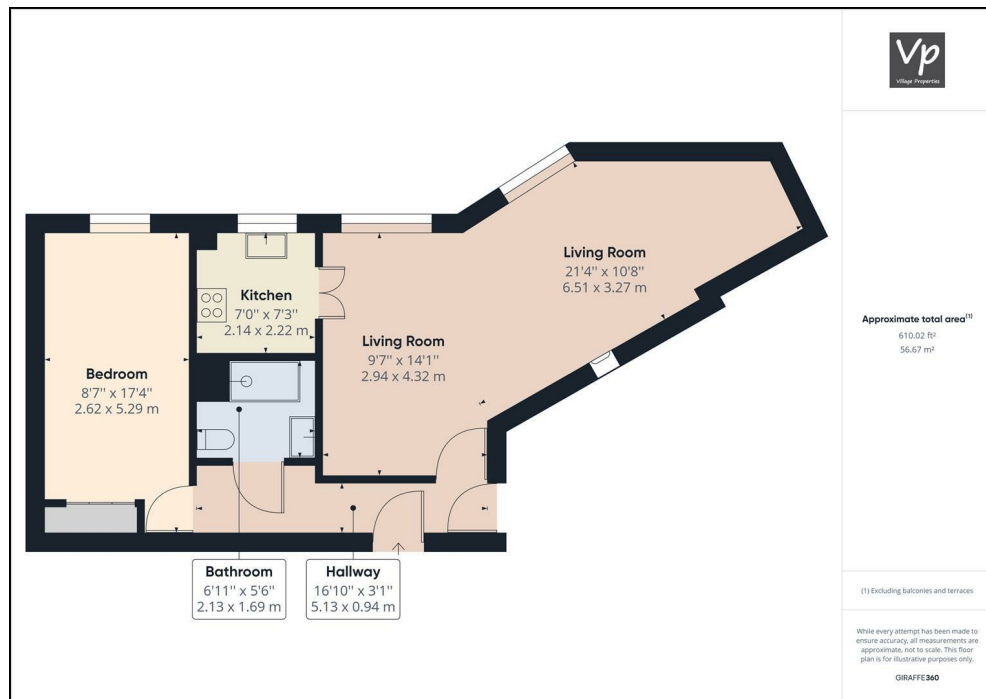
33 Haydon Court, Waltham Road
Twyford, RG10 9EP



Guide price £119,950 Leasehold

VillageProperties.co.uk

33 Haydon Court, Waltham Road



DESCRIPTION:

VP -360 VIRTUAL TOUR AVAILABLE.

No onward chain complications. Presented to the market is this one bedroom top floor apartment within easy reach of Twyford village and train station. The property comprises entrance hallway, bedroom, shower room, storage cupboard, living/dining room and kitchen. There are great views from the living area overlooking the communal garden and beyond.

Haydon Court was constructed by McCarthy & Stone (Developments) Ltd and comprises 32 properties consisting of 1 and 2 bedrooms arranged over 3 floors each served by lift. The Development Manager can be contacted from various points within each property in the case of an emergency. For periods when the Development Manager is off duty there is a 24 hour emergency Appello call system. Each property comprises an entrance hall, lounge, kitchen, one or two bedrooms and bathroom. It is a condition of purchase that residents be over the age of 55 years.

Council tax band - C (Wokingham)

Service Charge: £2,284.12

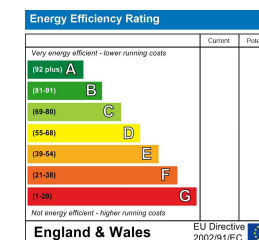
Ground rent -TBC

Lease - 103 years remaining

SUMMARY OF ACCOMMODATION:

- TOP FLOOR APARTMENT
- COMMUNAL GARDENS
- RESIDENTS LOUNGE
- LIFT ACCESS
- NO ONWARD CHAIN
- GUEST SUITE

ADDITIONAL INFO:



VIEWING STRICTLY BY APPOINTMENT:

T: 0118 941 5607

E: sales@villageproperties.org

W: www.villageproperties.co.uk

92 School Road
Reading
RG31 5AU

Get Social

