



7 Southlake Court
Woodley, RG5 3SQ

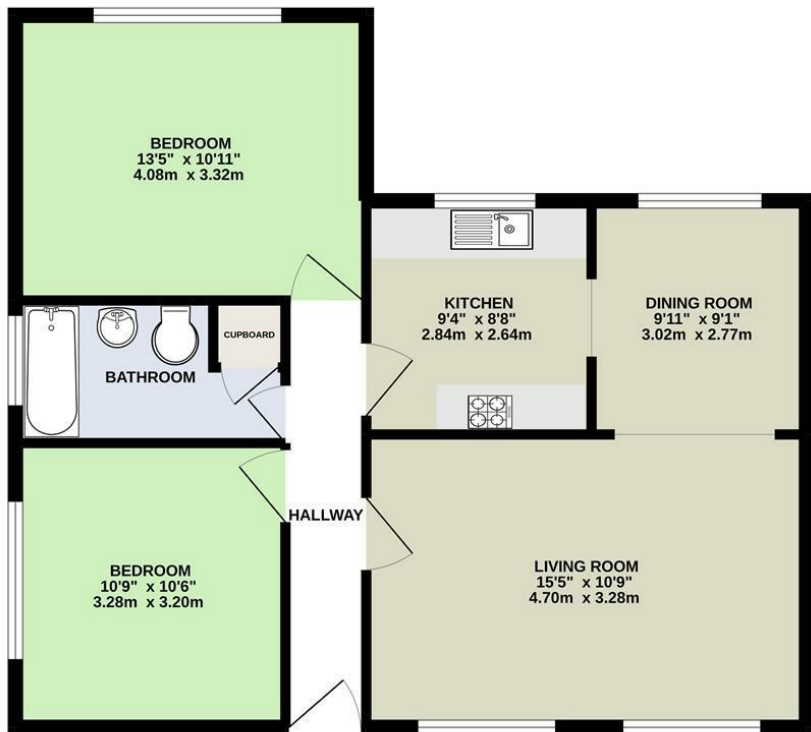


Guide price £250,000 Leasehold

[VillageProperties.co.uk](https://www.villageproperties.co.uk)

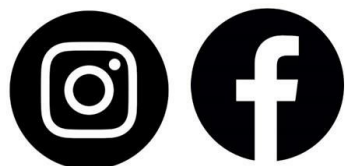
7 Southlake Court

GROUND FLOOR



Whilst every attempt has been made to ensure the accuracy of the floorplan contained here, measurements of doors, windows, rooms and any other items are approximate and no responsibility is taken for any error, omission or mis-statement. This plan is for illustrative purposes only and should be used as such by any prospective purchaser. The services, systems and appliances shown have not been tested and no guarantee as to their operability or efficiency can be given.
Made with Metropix ©2022

Get Social



DESCRIPTION:

VP - Presented to the market is this ground floor two double bedroom apartment located 0.2 miles from Earley train station and backing onto South Lake. The property comprises entrance hallway, two bedrooms, bathroom, kitchen/dining room and living room. Externally there is communal gardens and a garage in block.

Council Tax Band C

120 years remaining on lease

Ground rent £155 every 6 months

Maintenance £550 every 6 months.

SUMMARY OF ACCOMMODATION:

- GROUND FLOOR
- COUNCIL TAX BAND C
- GARAGE IN BLOCK
- TWO DOUBLE BEDROOMS
- 120 YEARS LEFT ON LEASE
- 0.2 MILES TO TRAIN STATION

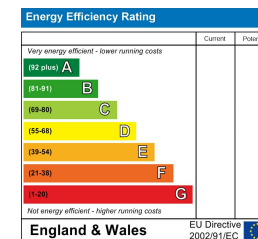
ADDITIONAL INFO:

VIEWING STRICTLY BY APPOINTMENT:

T: 0118 436 0580

E: twyford@villageproperties.org

W: www.villageproperties.co.uk



12 High Street,
Twyford,
RG10 9AE