



7 Sheppard Court
Tilehurst, RG31 5JF

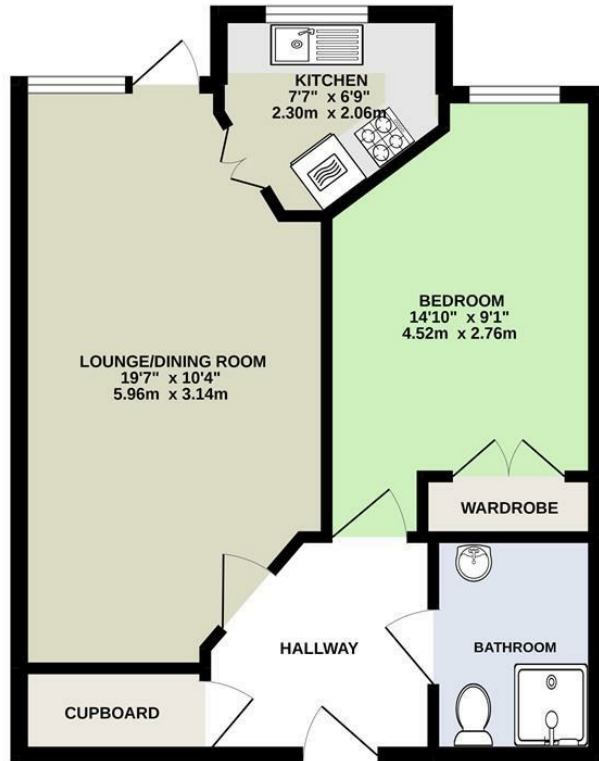


Guide price £90,000 Leasehold

VillageProperties.co.uk

7 Sheppard Court

GROUND FLOOR
451 sq.ft. (41.9 sq.m.) approx.



TOTAL FLOOR AREA : 451 sq.ft. (41.9 sq.m.) approx.
Whilst every attempt has been made to ensure the accuracy of the floorplan contained here, measurements of doors, windows, rooms and any other items are approximate and no responsibility is taken for any error, omission or mis-statement. This plan is for illustrative purposes only and should be used as such by any prospective purchaser. The services, systems and appliances shown have not been tested and no guarantee as to their operability or efficiency can be given.
Made with Metropix ©2022

DESCRIPTION:

VP - Presented to the market with no onward chain is this one double bedroom ground floor (over 55) retirement apartment built by Messrs McCarthy & Stone. The accommodation comprises lounge/diner with door out to main car park, kitchen, bathroom and a larger than average bedroom with fitted cupboards. The retirement complex has the added advantage of resident management staff, community alarm service, lift, lounge, laundry, guest facilities, garden and conservatory.

Ground Rent = £192.50 every 6 months

Service Charge = £1,848.63 every 6 months

108 yrs remaining on lease

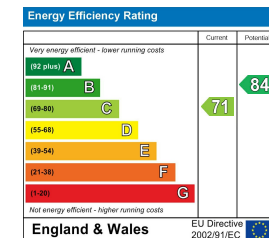
Includes water rates, maintenance of building, gardens, alarm systems, cleaning of communal parts etc.

Local Authority - Reading Borough Council - Tax Band C

SUMMARY OF ACCOMMODATION:

- NO ONWARD CHAIN
- GROUND FLOOR
- OVER 55'S
- ONE LARGE BEDROOM
- LIVING/DINING ROOM

ADDITIONAL INFO:



VIEWING STRICTLY BY APPOINTMENT:

T: 0118 941 5607

E: sales@villageproperties.org

W: www.villageproperties.co.uk

92 School Road
Reading
RG31 5AU

Get Social

