



42a Manor Road

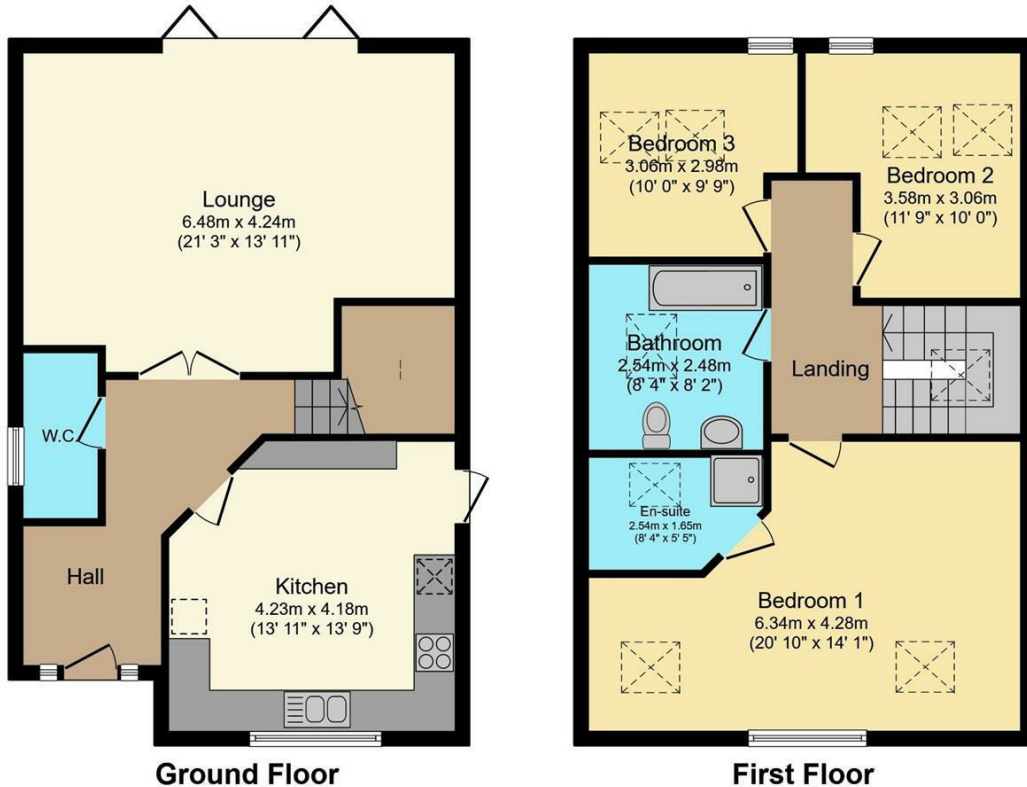
Sherborne St. John, RG24 9JN



Offers in excess of £550,000 Freehold

[VillageProperties.co.uk](https://www.villageproperties.co.uk)

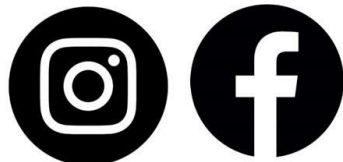
42a Manor Road



Total floor area 122.7 sq.m. (1,320 sq.ft.) approx

This floor plan is for illustrative purposes only. It is not drawn to scale. Any measurements, floor areas (including any total floor area), openings and orientation are approximate. No details are guaranteed, they cannot be relied upon for any purpose and they do not form part of any agreement. No liability is taken for any error, omission or misstatement. A party must rely upon its own inspection(s). Plan produced for Purple Bricks. Powered by www.focalagent.com

Get Social



DESCRIPTION:

VP - Presented to the market with no onward chain is this brand new three bedroom detached house with off road parking for several cars.

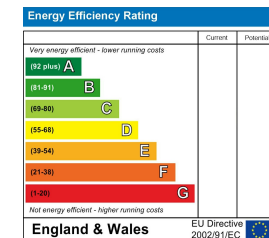
The accommodation comprises entrance hallway, WC, fitted kitchen and living room with bi-fold doors leading to the rear garden. On the first floor there are three bedrooms with an en-suite to the master bedroom and a separate bathroom suite. Externally there is a side access gate leading to the enclosed rear garden which has a mixture of patio and law area. The property benefits from underfloor heating, an electric car charging point, and an impressive high quality finish throughout.

Located in the popular village Sherborne St John and within a short distance of parks, local amenities, and transport links. Basingstoke Town Centre, M3 junction 6, and mainline train station are all within a short distance making this an excellent purchase within a sought after area.

SUMMARY OF ACCOMMODATION:

- 10 YEAR NHBC GUARANTEE
- THREE BEDROOMS
- UNDERFLOOR HEATING
- THREE BATHROOMS
- DETACHED
- AMPLE OFF ROAD PARKING
- DOWNSTAIRS WC
- VILLAGE LOCATION

ADDITIONAL INFO:



VIEWING STRICTLY BY APPOINTMENT:

T: 0118 941 5607
 E: sales@villageproperties.org
 W: www.villageproperties.co.uk

92 School Road
 Reading
 RG31 5AU