

Vp

84 Corwen Road
Tilehurst, RG30 4SU

Offers in excess of £300,000 Freehold

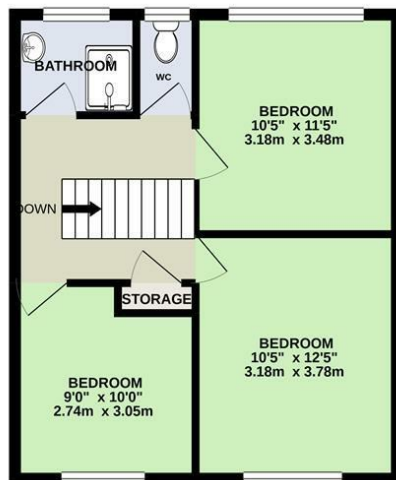
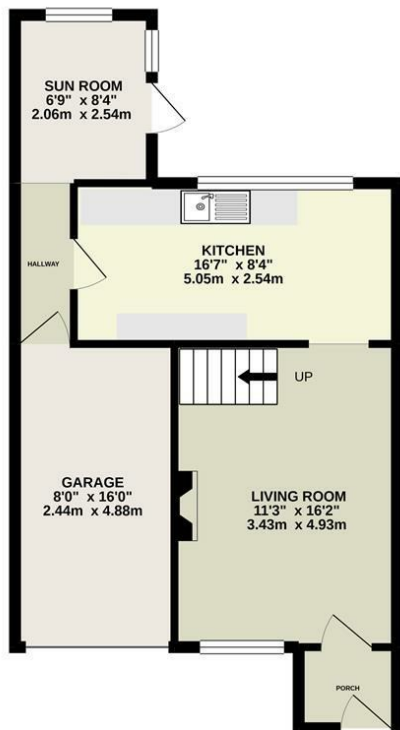
VillageProperties.co.uk



84 Corwen Road

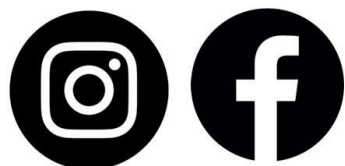
GROUND FLOOR
507 sq.ft. (47.1 sq.m.) approx.

1ST FLOOR
434 sq.ft. (40.3 sq.m.) approx.



TOTAL FLOOR AREA: 940 sq.ft. (87.4 sq.m.) approx.
Whilst every attempt has been made to ensure the accuracy of the floorplan contained here, measurements of doors, windows, rooms and any other items are approximate and no responsibility is taken for any error, omission or mis-statement. This plan is for illustrative purposes only and should be used as such by any prospective purchaser. The services, systems and appliances shown have not been tested and no guarantee as to their operability or efficiency can be given.
Made with Metaplan (©2021)

Get Social



DESCRIPTION:

VP - No onward chain. Presented to the market is this three bedroom terrace house with off road parking and a garage. The property comprises entrance porch, living room, kitchen/breakfast room, sun room and access to the garage. On the first floor there are three bedrooms, shower room and WC. The rear garden has a small patio area, lawn and outbuilding/shed.

SUMMARY OF ACCOMMODATION:

- THREE BEDROOMS
- OFF ROAD PARKING
- KITCHEN/DINING ROOM
- OUTBUILDING/SHED
- GARAGE
- NO ONWARD CHAIN
- SUN ROOM
- GAS CENTRAL HEATING

ADDITIONAL INFO:

Energy Efficiency Rating		Current	Potential
Very energy efficient - lower running costs			
(92 plus)	A		
(81-91)	B		
(69-80)	C		
(55-68)	D		
(39-54)	E		
(21-38)	F		
(1-20)	G		
Not energy efficient - higher running costs			
England & Wales		EU Directive 2002/91/EC	

VIEWING STRICTLY BY APPOINTMENT:

T: 0118 941 5607
E: sales@villageproperties.org
W: www.villageproperties.co.uk

92 School Road
Reading
RG31 5AU