



Village Properties

10 Bitterne Avenue
Tilehurst, RG31 4SP

Guide price £325,000 Freehold

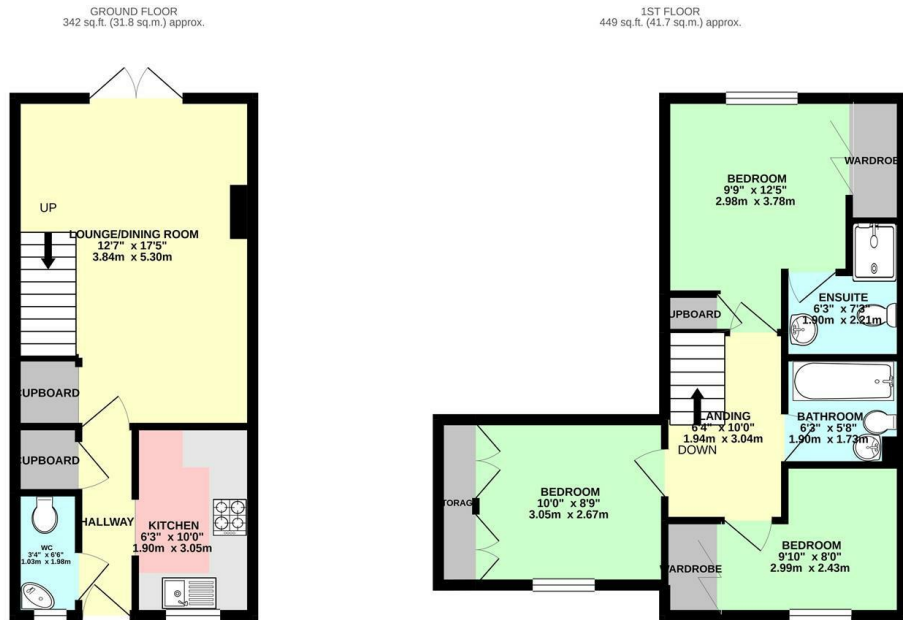


VillageProperties.co.uk

10 Bitterne Avenue

DESCRIPTION:

VP - Presented to the market is this three bedroom house with off road parking and a garage. The property comprises entrance hallway, fitted kitchen, WC, living/dining room with double doors to the rear garden. On the first floor there are three bedrooms, en suite to master bedroom and a separate bathroom. The rear garden has an outbuilding which is perfectly set up for a home office, there is a gate which takes you out to the parking spaces and garage.



TOTAL FLOOR AREA : 792 sq.ft. (73.5 sq.m.) approx.
 Whilst every attempt has been made to ensure the accuracy of the floorplans contained here, measurements of doors, windows, rooms and any other items are approximate and no responsibility is taken for any error, omission or mis-statement. This plan is for illustrative purposes only and should be used as such by any prospective purchaser. The services, systems and appliances shown have not been tested and no guarantee as to their operability or efficiency can be given.
 Made with Metropac ©2020

SUMMARY OF ACCOMMODATION:

- THREE BEDROOMS
- NO ONWARD CHAIN
- DOWNSTAIRS WC
- GARAGE & OFF ROAD PARKING
- EN SUITE
- LIVING/DINING ROOM

ADDITIONAL INFO:

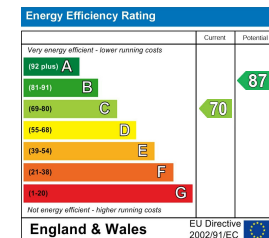
Approx.net floor area: 1057 sq.ft/ 98.2 sq.m

Local Authority: West Berkshire Council Tax Band: D

Approx. Distances:
 Tilehurst Railway Station: 2.1 Miles
 M4 motorway (J12): 2.4 Miles

VIEWING STRICTLY BY APPOINTMENT:

T: 0118 941 5607
 E: sales@villageproperties.org
 W: www.villageproperties.co.uk



92 School Road
 Reading
 RG31 5AU